

**HISTORIC AND ROYAL JEWELS STEAL THE SHOW  
at London's Flagship Summer Art Fair**

**ROSIOR**

**Portugal's cult jeweller makes its fair debut**

Highlights include:

**A Hamnet-era mourning jewel**

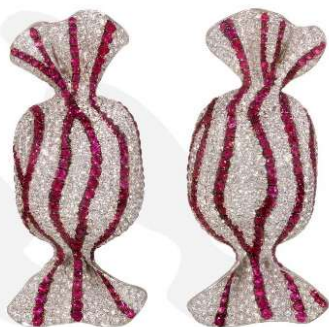
rediscovered 400 years after it was immortalised in  
one of Britain's most enigmatic 17<sup>th</sup>-century portraits

**The Duke of Alba's 1900 Cartier Golden Fleece insignia,  
the highest chivalric honour of the Spanish Crown**

**Treasures by Cartier and other leading houses**

Royal Hospital Chelsea, London | 24–30 June 2026

**Press Preview on 24 June | 10am – 4pm**



Treasure House Fair – London’s flagship summer art fair – has firmly established itself as the UK’s leading destination for historic and antique jewellery. This year, the fair returns to the grounds of the Royal Hospital Chelsea with its roster of leading dealers, and welcomes **Rosior** - Portugal’s cult jewellery maison – making its debut at a European fair.

**Martyn Downer**, specialist dealer in historic objects and works of art, will devote his entire stand to a Hamnet-era mourning jewel, rediscovered four centuries after it was immortalised in one of Britain’s most enigmatic and celebrated 17<sup>th</sup>-century family portraits. Set within a dramatic scenography, the pendant will respond with another rediscovered piece of history on the booth of **Greens of Cheltenham**: a 16<sup>th</sup>-century ring that belonged to a knight close to Henry VIII and Queen Anne, from a family later erased from the history books after its entanglement in the Gunpowder Plot of 1605.

This year’s line-up brings together long-established London specialists, including **S.J. Phillips** - a 150-year-old Mayfair institution beloved by tastemakers such as Anna Wintour - and **Wartski**, the jewellers to The Royal Family whose high-profile commissions include the wedding bands of Their Majesties King Charles and Queen Camilla, as well as that of the Princess of Wales. They will be joined by two other leading names in the field of antique jewellery, **Greens of Cheltenham** and **Sandra Cronan**. Making their first appearance at a European fair, **Rosior** - one of Portugal’s most distinguished jewellery houses - will showcase pieces from the rarefied 130 one-of-a-kind works they produce annually.

## TWO BRITISH HISTORIC JEWELS REDISCOVERED

### *Hamnet-era mourning jewel identified after four centuries*



John Souch, *Sir Thomas Aston at the Deathbed of his Wife*, 1635, oil on canvas, 215.1 x 203.2 cm, City Art Gallery, Manchester. Photo: Bridgeman Art Library

**Martyn Downer**, specialist dealer in historic objects and works of art, will devote his entire stand - conceived as a dramatic scenography exploring death in the time of Shakespeare – to this *Memento Mori* jewel long believed lost to history.



Made to commemorate the death of Sir Thomas Aston's six-year-old son, Robert, who died in 1634, the heart-shaped pendant poignantly suspends a tassel of the child's blonde hair. Sir Thomas is depicted wearing the jewel in the monumental life-size 1635 masterpiece *Sir Thomas Aston at the Deathbed of His Wife* by John Souch, now in the collection of Manchester Art Gallery.

Although the artist rendered the jewel with remarkable precision, only now - through the discovery of the actual pendant – can its full meaning, details, and inscriptions be understood. Heart-shaped and surrounded by a golden wreath, the pendant jewel is enamelled in black and white with a death's head skull and inscriptions in Latin on both sides, translated as: 'Your Robert died 4th May 1634' (front) / 'In whom was our delight, through whom was our consolation, with whom the hope of his parents first perished' (reverse). Please see dedicated press release for more details.

### ***Sir Thomas Tresham's Signet Ring, circa 1557***

Presented by Greens of Cheltenham, London

**One of the last tangible remnants of a family whose name faded from history after its implication in the Gunpowder Plot of 1605**



The gold and crystal ring, of strikingly large proportions and likely intended to be worn over a gloved thumb, was made for Sir Thomas Tresham (d.1559), a knight and one of England's most ardent Catholic recusants. A close confidant of Henry VIII and Queen Anne, he was entrusted with some of the monarchs' most delicate missions - including welcoming Henry's fourth wife, Anne of Clèves, at Calais.

## ROYAL PROVENANCE

### *The 16<sup>th</sup> Duke of Alba's order of the golden-fleece*

Presented by S.J. Phillips, London



The Nephew of Empress Eugénie, wife of Napoleon III, Carlos María Fitz-James Stuart y Portocarrero y Palafox XVI Duke of Alba de Tormes (1849-1901) was invested in April 1900 as a Knight of the distinguished Order of the Golden Fleece, the highest Spanish chivalric Honour. This **diamond, sapphire and ruby full order with stickpin and medal miniature** were commissioned in 1900 from Chaumet by the wife of the Duke, María del Rosario Falcó y Osorio, XII Countess of Siruela.

### *Mourning Ring for Edward IV (1442-1483), Richard III's brother*

Gold, silver, enamel and diamonds. The reverse inscribed: '*Hair of Edward 4th, who died [Ap]ril 9th 1483, discovered at Win[dsor], March 1789*'

Presented by Greens of Cheltenham, London

Born on 28 April 1442 at Rouen in France, the son of Richard Plantagenet, Duke of York, Edward IV was **twice king of England**, winning the struggle against the Lancastrians to establish the House of York on the English throne.

Edward died on 9 April 1483. Left in the protection of their uncle Richard, Duke of Gloucester, his young sons, Edward and Richard, were probably murdered in the Tower of London on the orders of Richard who took the throne as Richard III.



## 18<sup>th</sup>-CENTURY MARVELS



A fine English diamond cross pendant, *circa* 1780.  
© Sandra Cronan, London. Photo: Richard Valencia



A pair of extremely rare rose cut diamond pendant earrings. English/French, *circa* 1750.  
© Sandra Cronan, London. Photo: Richard Valencia

## CARTIER IN ALL ITS SPLENDOR



The Rock crystal and gold 'Crystal Stairs' bracelet designed for Cartier New York in 1970  
by Aldo Cipullo, the man behind the Love Bracelet  
© Wartski, London



A pair of Cartier gold and diamond clips of stylised leaf design. American, *circa* 1940  
© Sandra Cronan, London. Photo: Richard Valencia



A gem-set eye brooch by Cartier, *circa* 1950 © Wartski, London

## ROSIOR, A PORTUGUESE ICON STEPS ONTO THE LONDON STAGE

For their first-ever participation in a European fair, Rosior, one of Portugal's most respected jewellers, will present a curated selection of new creations alongside the house's most emblematic designs.

In their small 50-square-metre (540-square-foot) atelier in Porto, the family-run house produces just 130 one-of-a-kind, entirely handmade pieces each year. All creations are designed by **Graça Rosas**, 37, who - together with her brother José - now leads

the family business founded by their father, José Manuel José in 1978. Descended from a long lineage of jewellers and goldsmiths, the siblings represent the fifth generation of the Rosas family to devote themselves to the craft. Before establishing his own house, José Manuel José created jewels for Tiffany & Company, Saks Fifth Avenue, Fortunoff and Zales, honing the technical excellence that would become Rosior's hallmark.



Following in her father's footsteps, Graça works solely in platinum and 19.2-karat gold, developing each concept through plasticine maquettes or pared-back sketches. Yet she has introduced a contemporary, playful spirit to the house's aesthetic. This fresh energy is evident in pieces, such as the **Candy earrings**, wrapped in pavé diamonds and rubies, the **whimsical fish earrings** set with shimmering diamonds, sapphires and emeralds and a **pair of Art Deco-inspired earrings** in onyx, emeralds, diamonds, sapphires and tsavorite garnets. All are unique pieces.



## THE TREASURE HOUSE ART FAIR

London's pre-eminent interdisciplinary art fair, The Treasure House Fair was founded in 2023 by Thomas Woodham-Smith and Harry Van der Hoorn – the co-founders of *Masterpiece* (2009-2022). Brought to life in less than six months following the closure of *Masterpiece*, the fair's first edition set in the beautiful grounds of the Royal Hospital Chelsea offered a fresh and bold remastering of London's traditional summer fair, with a promise to preserve the event's international renown for expertise and exceptional quality. Pursuing a tradition of summer art fairs in London going back to 1934, the fair is testament to the strength of the British art market and the fact that London remains a unique destination for international art collectors

A "treasure house" of the rare and the beautiful, the historic and the cutting-edge, the interdisciplinary art fair blends items of quintessentially British character with hand-picked treasures from around the world. From the jewellery house that crafted Their Majesties King Charles and Queen Camilla's wedding rings, to young art dealers breaking new ground in the international art sphere, the fair will showcase galleries working at the apex of their disciplines. All vetted by independent experts, the carefully curated works on display will take the visitors on a journey through millennia of mankind's creativity, from Antiquity to today.

## PRACTICAL INFORMATION

Treasure House Fair

4<sup>th</sup> Edition - 24-30 June 2026

Royal Hospital Chelsea

South Grounds London, SW3 4SR

[Treasurehousefair.com](https://treasurehousefair.com)

## PRESS

Press Preview: 24 June, 10am

Marie-Béatrice Morin

E. [marie-b@mariebmorin.com](mailto:marie-b@mariebmorin.com)

M. +44 7809316295